

B	1	9	T	8	2
---	---	---	---	---	---

**Vilnius Railway Station Complex, Central Station
Square and Public Transport Terminal international
open architectural project competition**

- EXPLANATORY NOTE -

TABLE OF CONTENTS

DESIGN AGENDA

Design Description	01
Concept Model	02

MASTER PLAN

Pedestrian Circulation	04
Bicycle Circulation	05
Vehicle Traffic Circulation	06

RAILWAY COMPLEX

Ground Floor Plan	07
First Floor Plan	08
Second Floor Plan	09
Mezzanine & Underground Floor Plans	10
Elevations & Sections	11
Axonometric Structure Concept	12
Safety & Energy Concept	13
Area Chart	14
Area Assessment Chart (Existing Building)	15

PUBLIC TRANSPORT TERMINAL

Pedestrian Circulation	16
Bicycle Circulation	17
Vehicle Traffic Circulation	18
Elevations & Sections	19
Axonometric Structure & Energy Concept	20
Area Chart	21

STOTIES SQUARE

Concept & Lighting	22
Trees Relocation Scheme	23

Valley and Hill

Masterplan Concept

The proposal seeks to transcend the transportation system into a cultural landscape. The pedestrian, alleys and plazas are the natural social glue of the vicinity, openly interconnecting the Railway Station and the Public Transport Terminal. On urban scale, the existing Railway Station is augmented as a heritage monument and central to the overall planning, while both the new Railway Complex and the Public Transport Terminal are 21st century informal landscapes. From a higher elevation of the city, the concave shape of the New Railway Complex and the convex shape of the Public Transport Terminal appear as a Valley and a Hill – a curious wonder of duality.

Railway Complex

A transportation gateway, an urban connector and at the same time a cultural landscape. The extensive curves outline a vast circular path, celebrating the widespread railway tracks field. Its light presence accentuates the heritage façade of the existing railway station along its surrounding railway environment. As it descends towards its center in a concave manner, it forms a valley-like landscape. On pedestrian level, it suggests a contemplative stroll from the Old Railway Building toward the distant opposite and vice-versa. On transportation level, it continuously descends to the platforms beneath, where the atmosphere of the railway can be enjoyed intimately.

Public Transport Terminal

The Public Transport Terminal is the invert form of the valley of the Railway Complex. A hill-like landscape, it comprehensively blends into the overall green atmosphere of the Stoties Square's setting. The cascading canopies generate a comfortable volume transition: from the high ceiling of the bus stop in the center, towards its surrounding plaza. The lower canopies around the perimeter deliberately function as a generous walkway along the bicycle parking zone. Integrating transportation systems and plaza, the ground level is a singular landscape, open and approachable from all sides of the vicinity. Akin to walking under the shade of trees, where passerby may simply stroll through the generous canopies.

Naujininkai Centre

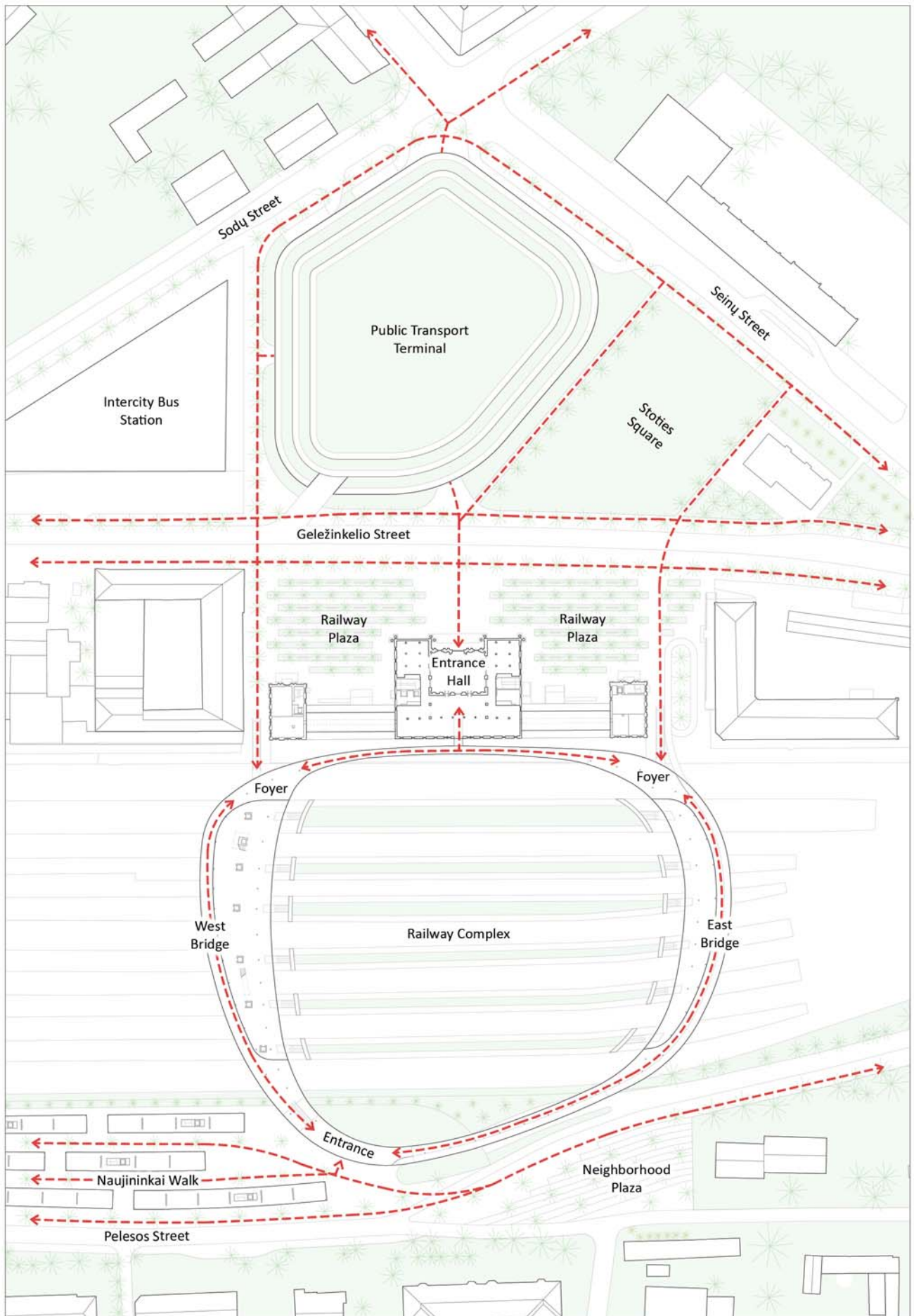
A series of elongated volumes that echo the shape of trains - the overall formation of the Naujininkai Centre planning conforms to the axes of the surrounding neighborhood streets, as well as the pedestrian circulation of the new Railway Complex. In between the series of volumes is a generous public space where passersby may enjoy an intimate commercial walk. A unique atmosphere which is set between the dynamic railway tracks on one side, and the tranquil neighborhood on the other. The clear glass facade presents visual connection and openness, yet at the same time, deliberately reduces the incoming noise and air from the railway tracks. Accordingly, it generates a comfortable micro environment for the commercial walk within.



The new Railway Complex addition is a generous landscape, it celebrates the extensive railway tracks



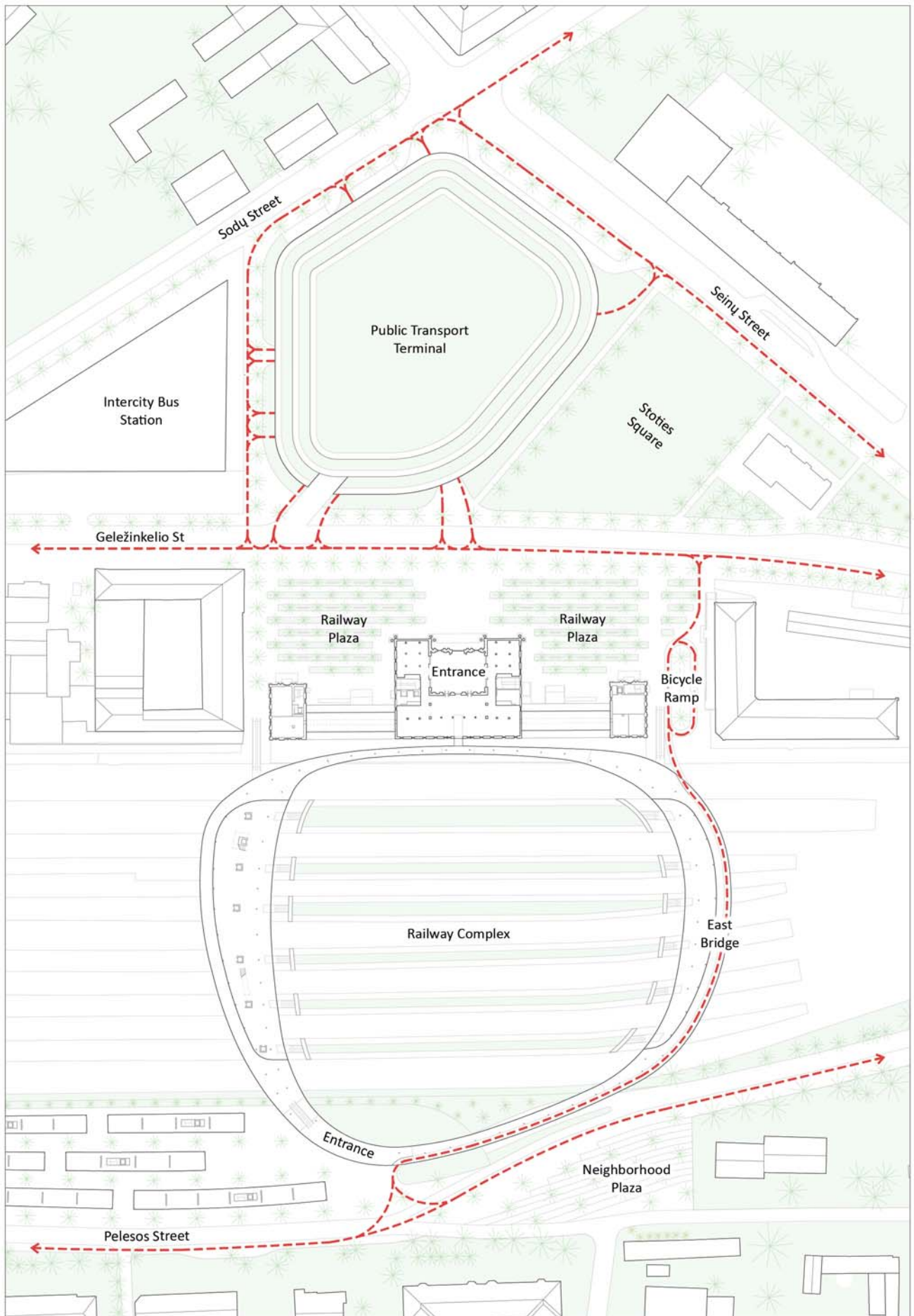
The new addition is a transparent landscape, and the existing Railway Building is a heritage monument

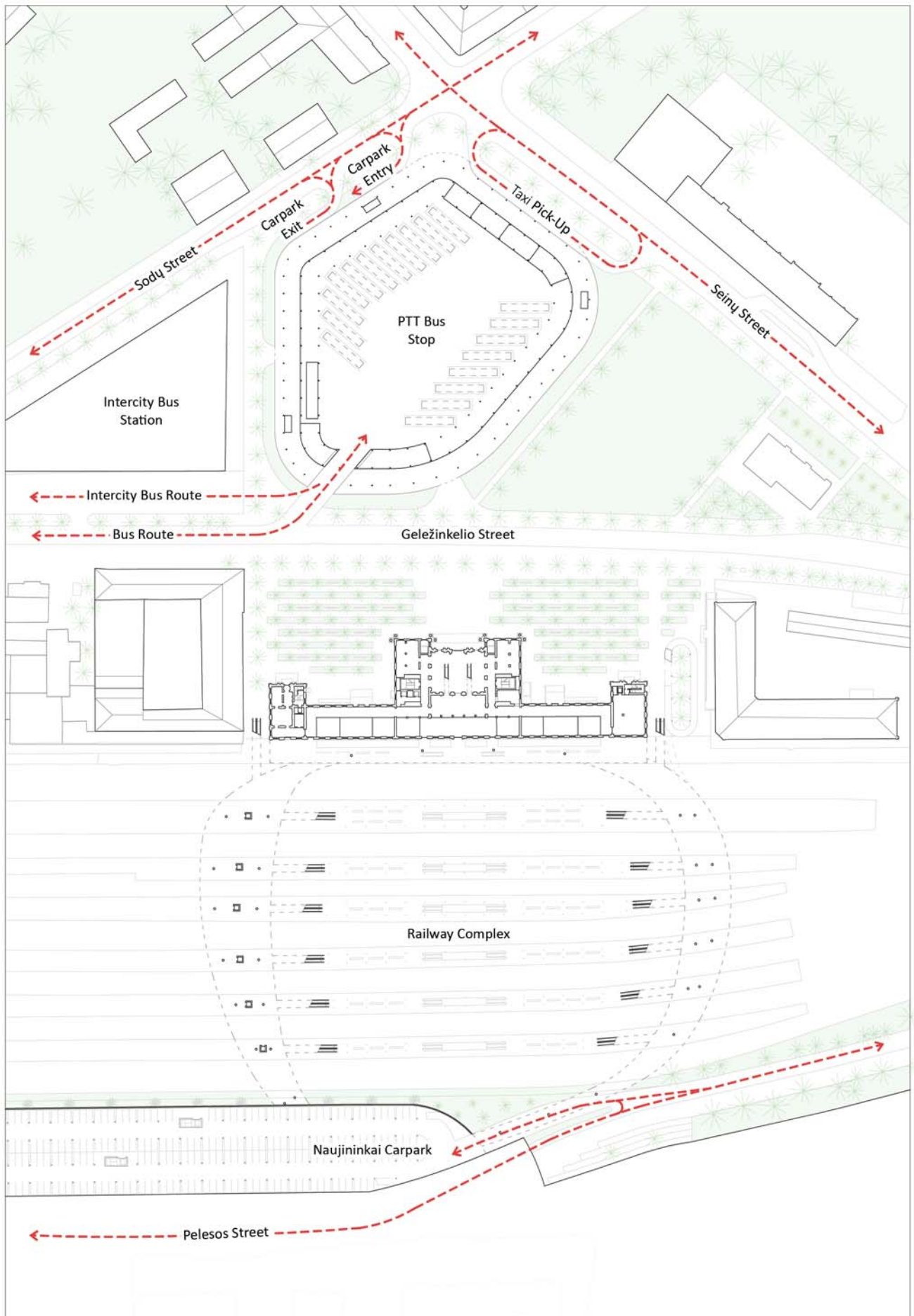


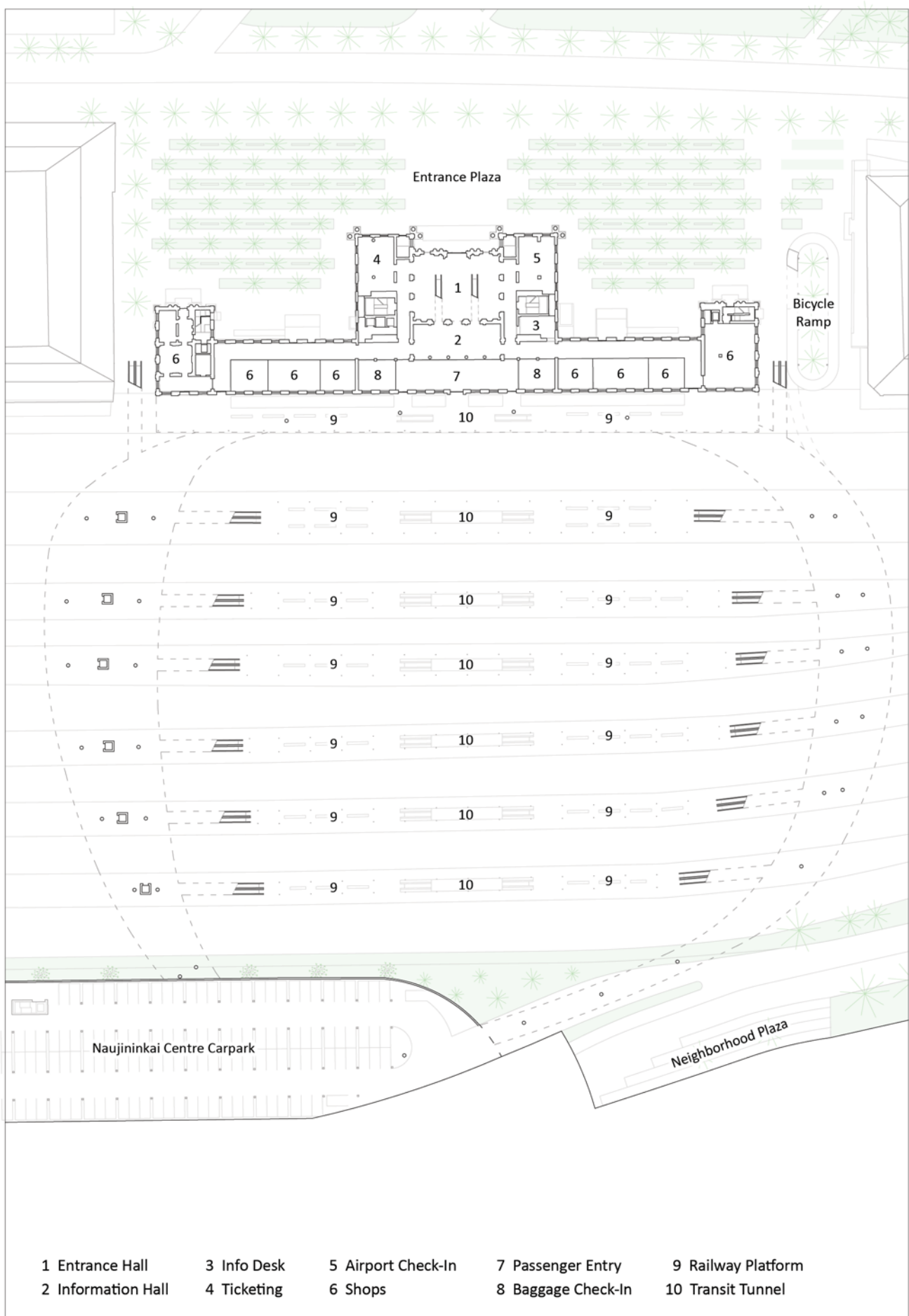
MASTER PLAN | Pedestrian Circulation | 1/2000

0 20M 40M 60M





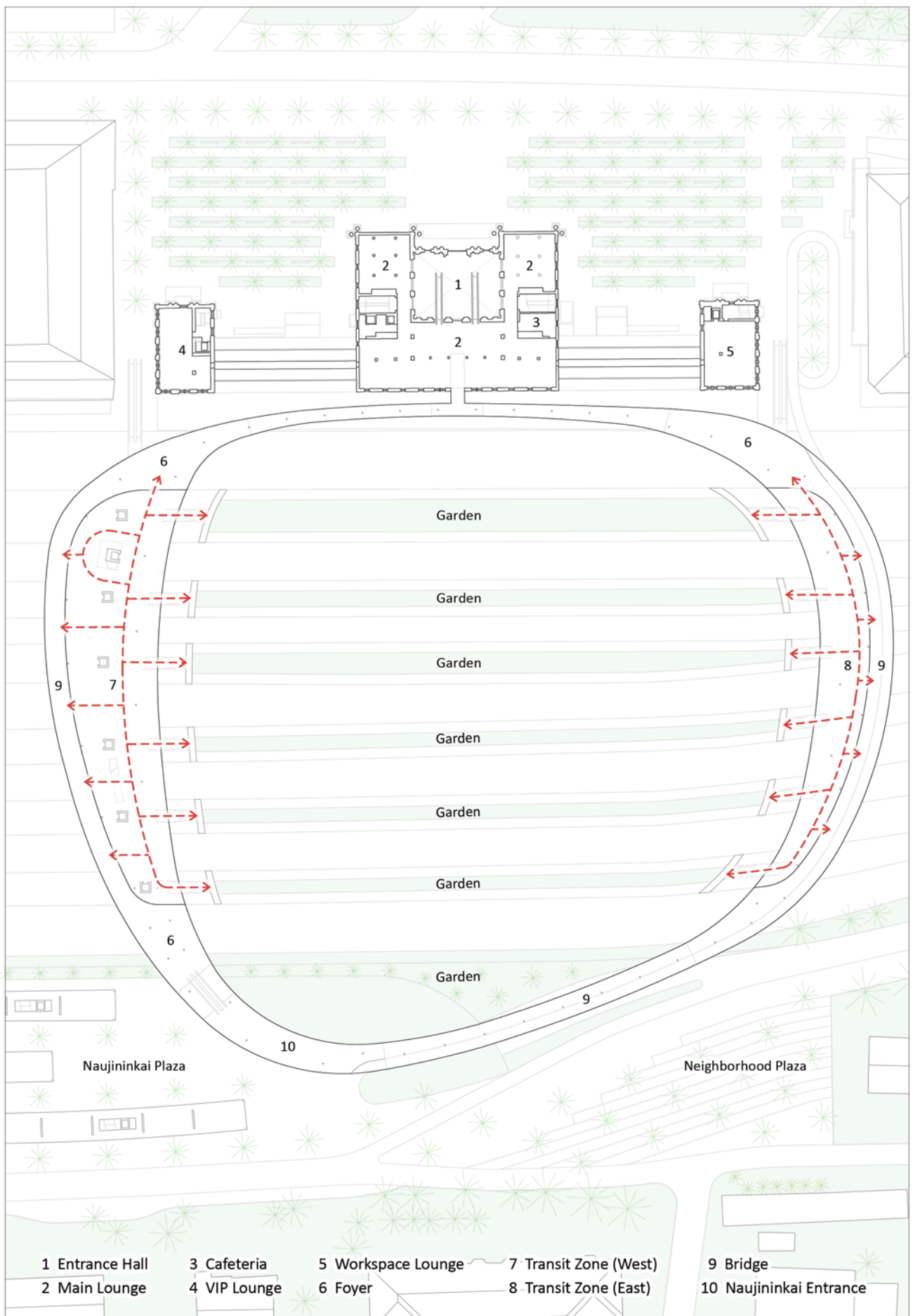




RAILWAY COMPLEX | Ground Floor Plan | 1/1250

0 20M 40M

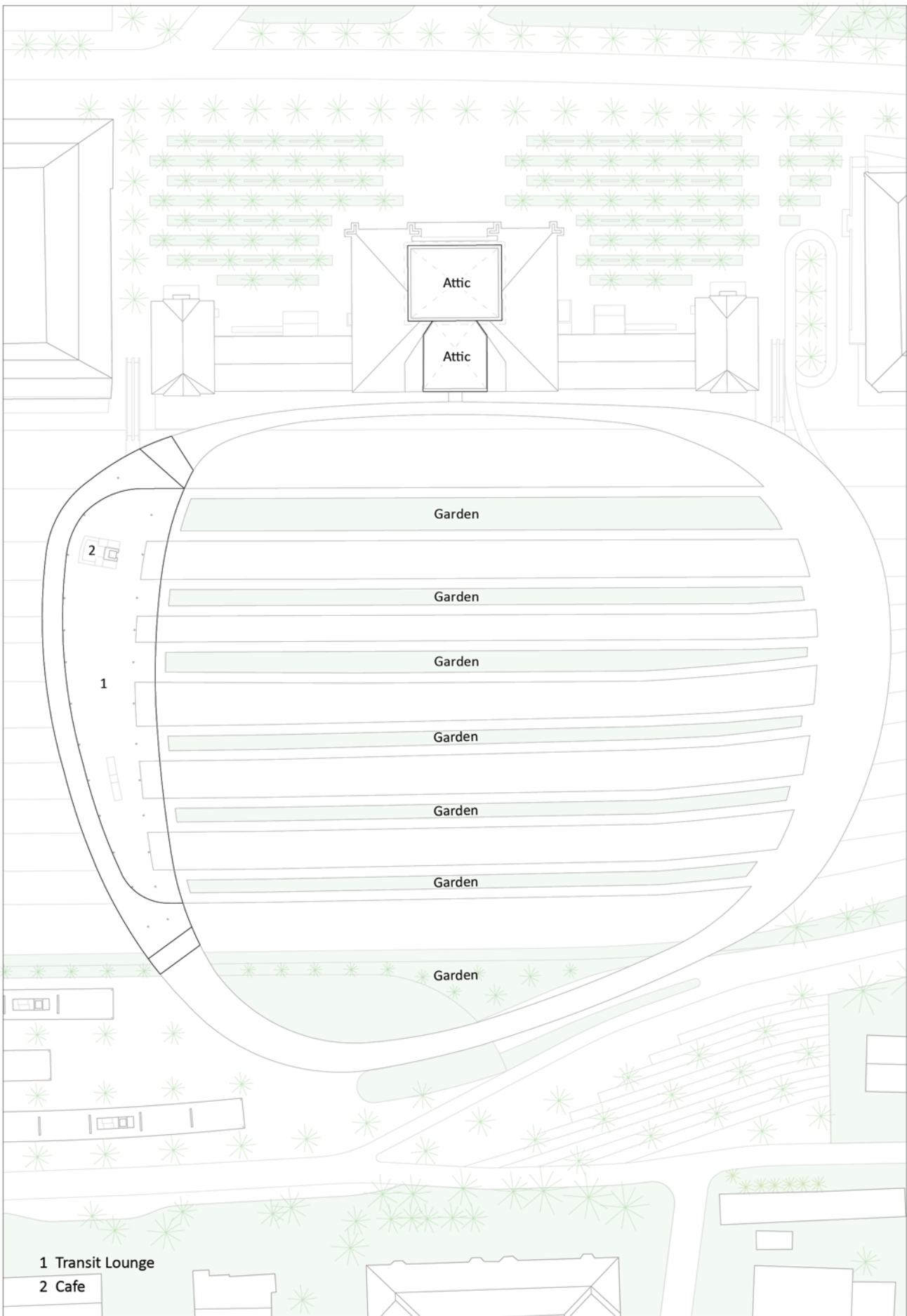




RAILWAY COMPLEX | Level 1 Floor Plan | 1/1250

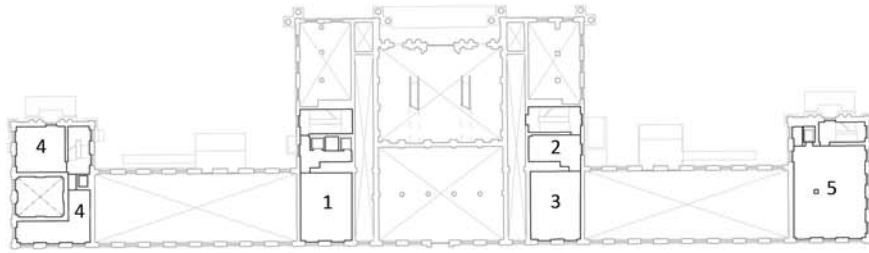
0 20M 40M





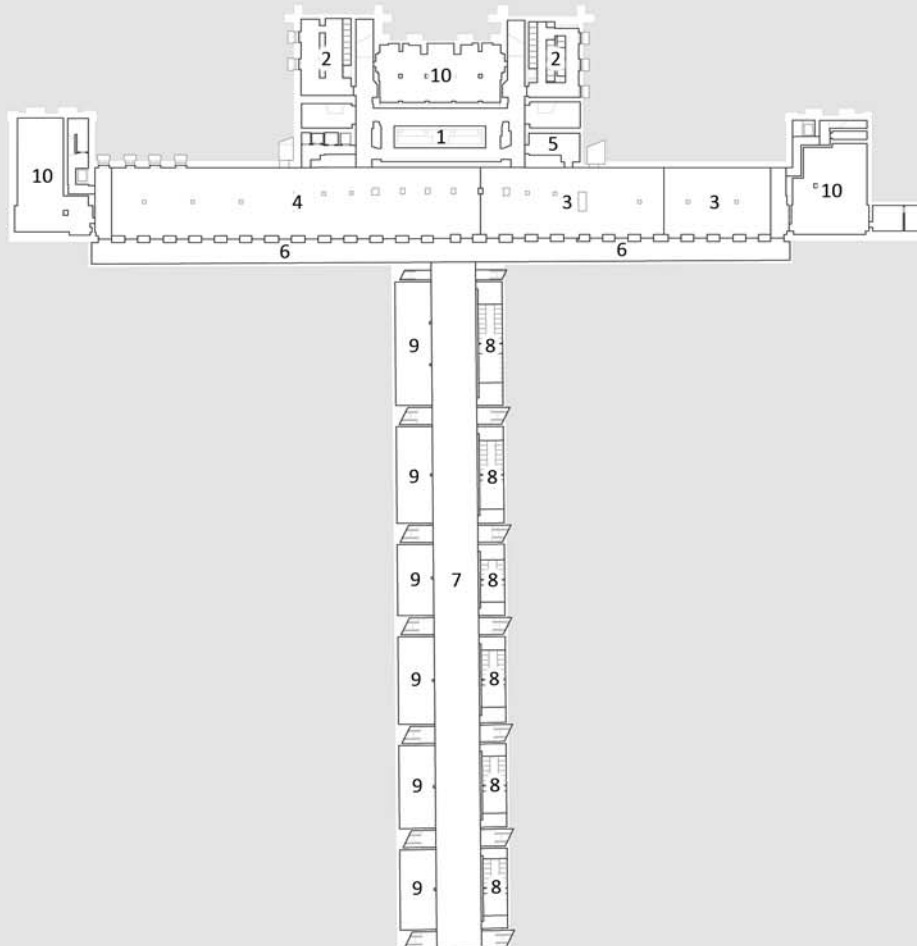
RAILWAY COMPLEX | Level 2 Floor Plan | 1/1250





- | | | |
|-------------------|----------------|------------------|
| 1 Children's Room | 3 Cafe Kitchen | 5 Resting Lounge |
| 2 Cafe Storage | 4 Meeting Room | |

RAILWAY COMPLEX | Mezzanine Floor Plan | 1/1250

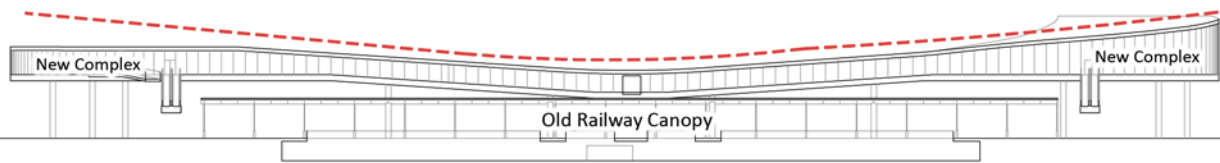


- | | | | | |
|----------------|-------------------|-----------------|-------------------|--------------------|
| 1 Self-storage | 3 General Office | 5 Office Pantry | 7 Transit Tunnel | 9 Customs Office |
| 2 Hygiene | 4 LTG LINK Office | 6 Lightwell | 8 Transit Hygiene | 10 Technical Space |

RAILWAY COMPLEX | Underground Floor Plan | 1/1250

0 20M 40M





North Elevation



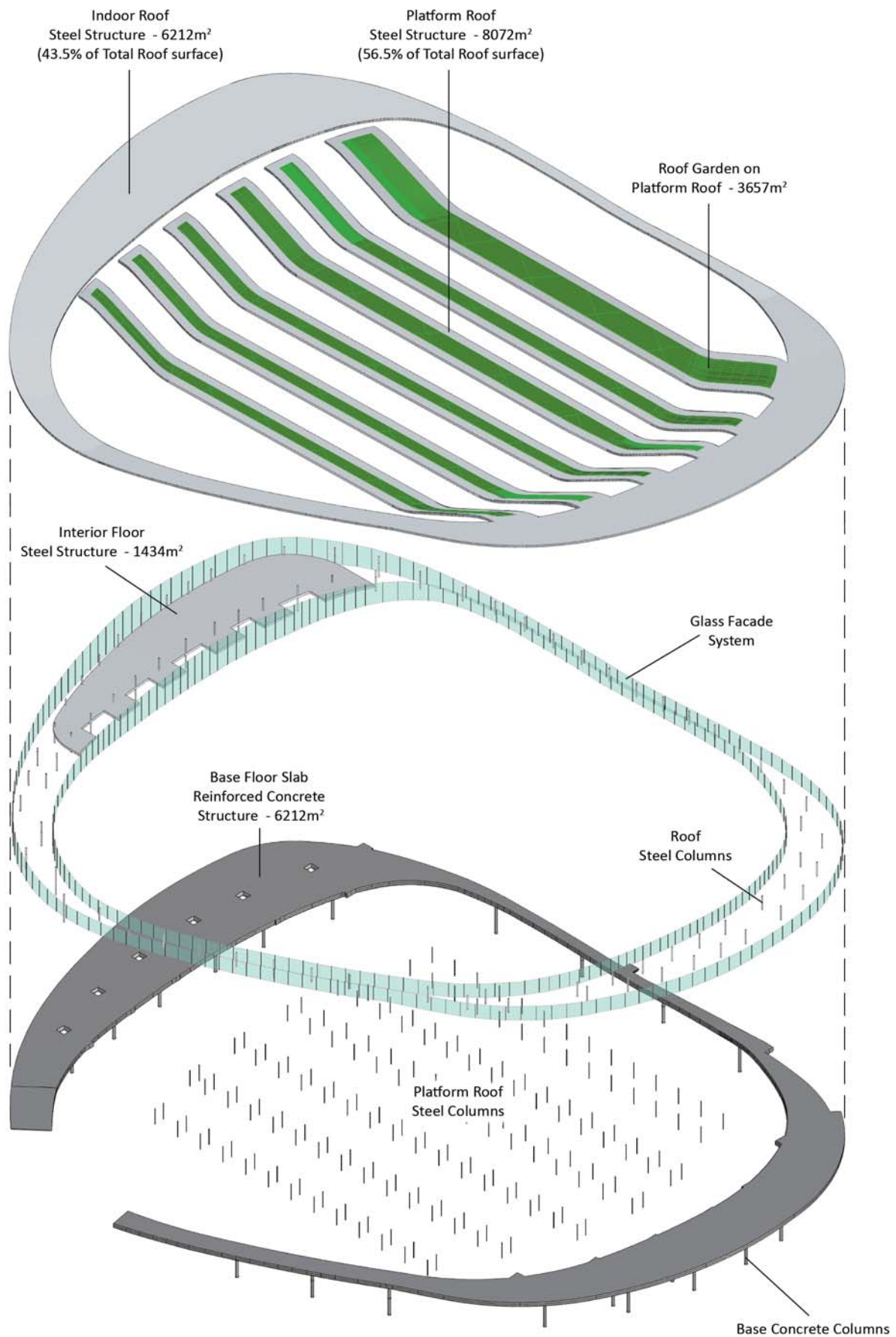
South Elevation

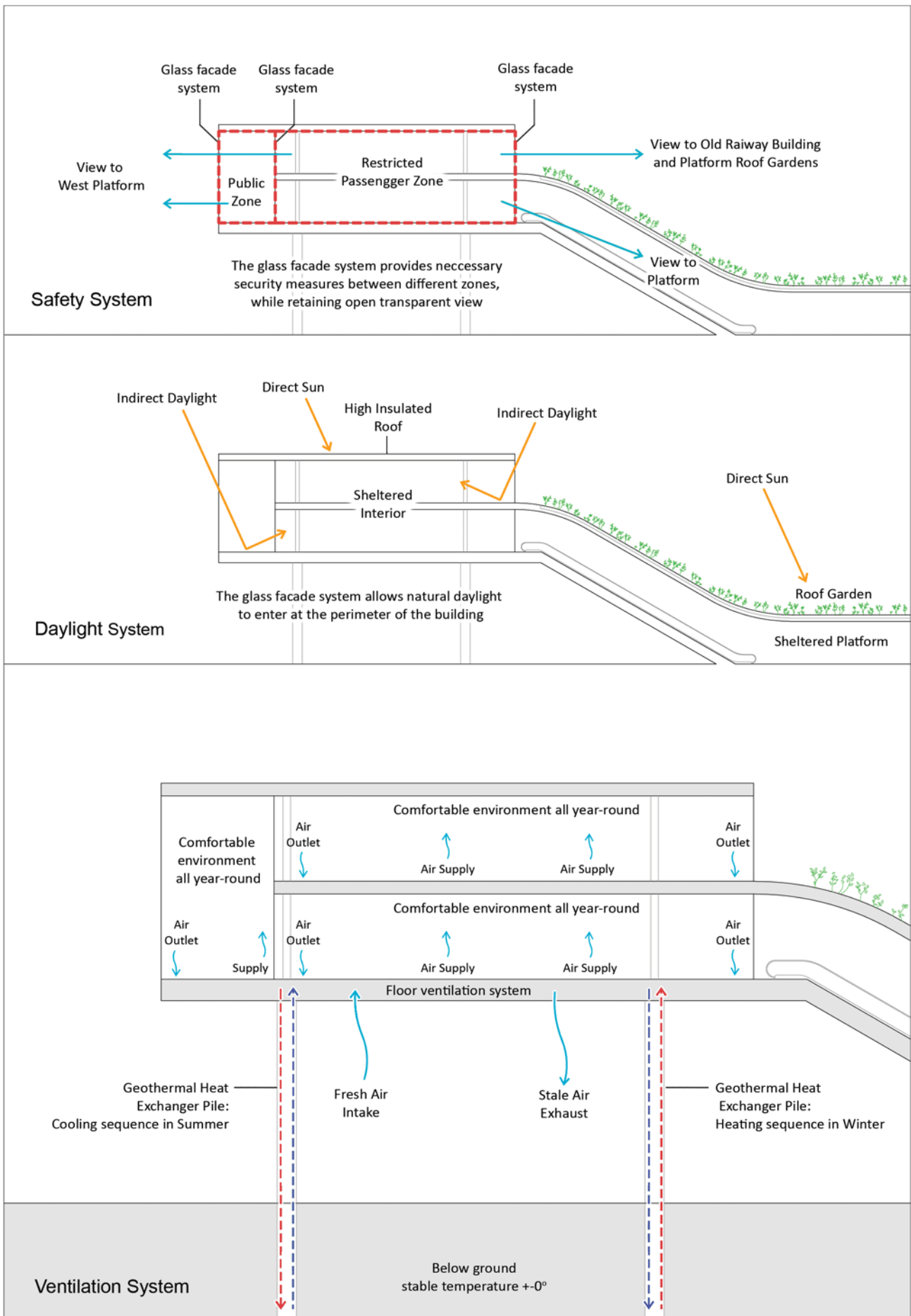


Longitudinal Section



Cross Section

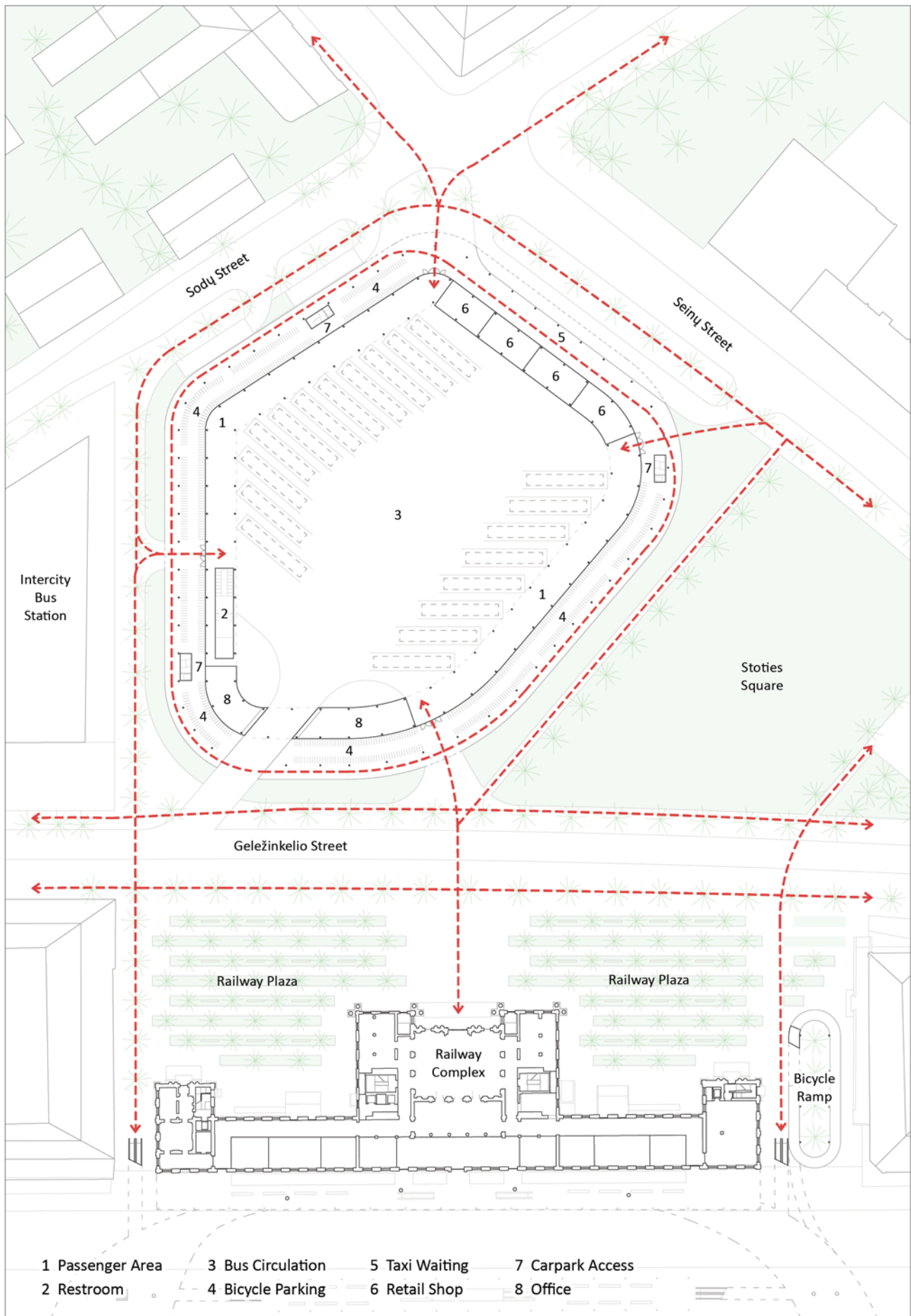




Area	Area Ratio (%)	'Public Zone' Floor Area (m ²)	'Restricted Zone' Floor Area (m ²)
1. Arrival / Departures Zones	11,6	1.838	407
Entrance Hall	1,8	352	-
Ticketing Area	0,7	130	-
Airport Check-in Area	0,7	128	-
Information Hall	0,5	90	-
Passenger Entry	1,1	-	218
Information Desk	0,3	-	53
Baggage Check-In	0,7	-	136
Self-Storage Baggage	1,1	212	-
Hygiene Facilities	1,3	242	-
Circulation	3,5	684	-
2. Passenger Terminal Zone	16,9	-	3.269
Transit Lounge (Indoor)	7,4	-	1.434
Platform Waiting Area (Outdoor)	7,5	-	1.448
Mini-retails & Hygiene Facilities	2,0	-	387
3. Transit Zones	18,9	-	3.663
Transit Zone (West)	9,6	-	1.850
Transit Zone (East)	5,1	-	978
Transit Tunnel (Underground)	4,3	-	835
4. Over-the-Tracks Connection	17,5	3.393	-
Paths, Foyers & Naujininkai Entrance	14,6	2.831	-
Bicycle Path	2,9	562	-
5. Traveller Service Zones	20,7	3.579	422
Lounge - Main	5,8	1.129	-
Children Room	0,6	112	-
Cafeteria (counter, kitchen & storage)	1,1	-	214
Tourism, Retail & Gallery Shops	4,4	847	-
Lounge - VIP	1,1	-	208
Lounge - Workspace & Rest	2,2	416	-
Meeting Rooms	1,4	278	-
Circulation	4,1	797	-
6. Border Control Zone	2,8	-	541
Customs Office	2,8	-	541
7. Administration Office	11,5	-	2.225
Office Premises & LTG Link Management	7,2	-	1.390
Traffic equipments & Technical Premises	3,3	-	647
Circulation & Restroom	1,0	-	188
Total Area	100,0	8.810	10.527
			19.337

Area	Room Quality*	Room Height (m)	Area Ratio (%)	Floor Area (m ²)	Volume Ratio (%)	Volume Area (m ³)
1. Ground Floor Level	-	-	33,0	2.869	47,0	19.150
Entrance Hall	A-1	16,1	4,1	352	13,9	5.667
Ticket & Airport Check-in	A-1	5,9	3,0	258	3,7	1.522
Information Hall & Corridor	A-1	5,9	3,1	268	3,9	1.581
Passenger Entry	A-1	5,9	2,5	218	3,2	1.286
Baggage & Info Desk	A-2	3,3	2,2	189	1,5	624
Shops (high ceiling)	A-1	6,4	12,0	1.046	16,4	6.694
Shops (low ceiling)	A-2	3,3	4,1	352	2,8	1.162
Circulation (Stairs & Lift)	-	3,3	2,1	186	1,5	614
2. Mezzanine Level	-	-	10,9	946	6,4	2.592
Children Room	C-1	2,6	1,3	112	0,7	291
Cafeteria (kitchen & store)	C-1	2,6	1,9	162	1,0	421
Meeting Rooms	C-2	2,6	3,2	278	1,8	723
Lounge - Rest	C-2	2,6	2,4	205	1,3	533
Circulation (Stairs & Lift)	-	3,3	2,2	189	1,5	624
3. First Floor Level	-	-	21,8	1.895	23,3	9.510
Lounge - Main	A-1	4,4 - 12,0	13,0	1.129	16,1	6.586
Cafeteria (counter)	A-1	4,4	0,6	52	0,6	229
Lounge - VIP	B	4,4	2,4	208	2,2	915
Lounge - Workspace	B	4,4	2,4	211	2,3	928
Attic	C-3	2,3	1,4	122	0,7	281
Circulation (Stairs & Lift)	-	3,3	2,0	173	1,4	571
4. Underground Level	-	-	34,3	2.979	23,4	9.533
Self-Storage Baggage	D-2	3,2	2,4	211	1,7	675
Hygiene Facilities	D-1	3,2	2,8	242	1,9	774
LTG Link & Office	D-1	3,2	16,0	1.390	10,9	4.448
Technical Premises	D-3	3,2	7,4	647	5,1	2.070
Circulation	-	3,2	5,6	489	3,8	1.565
Total Area	-	-	100,0	8.689	100,0	40.785

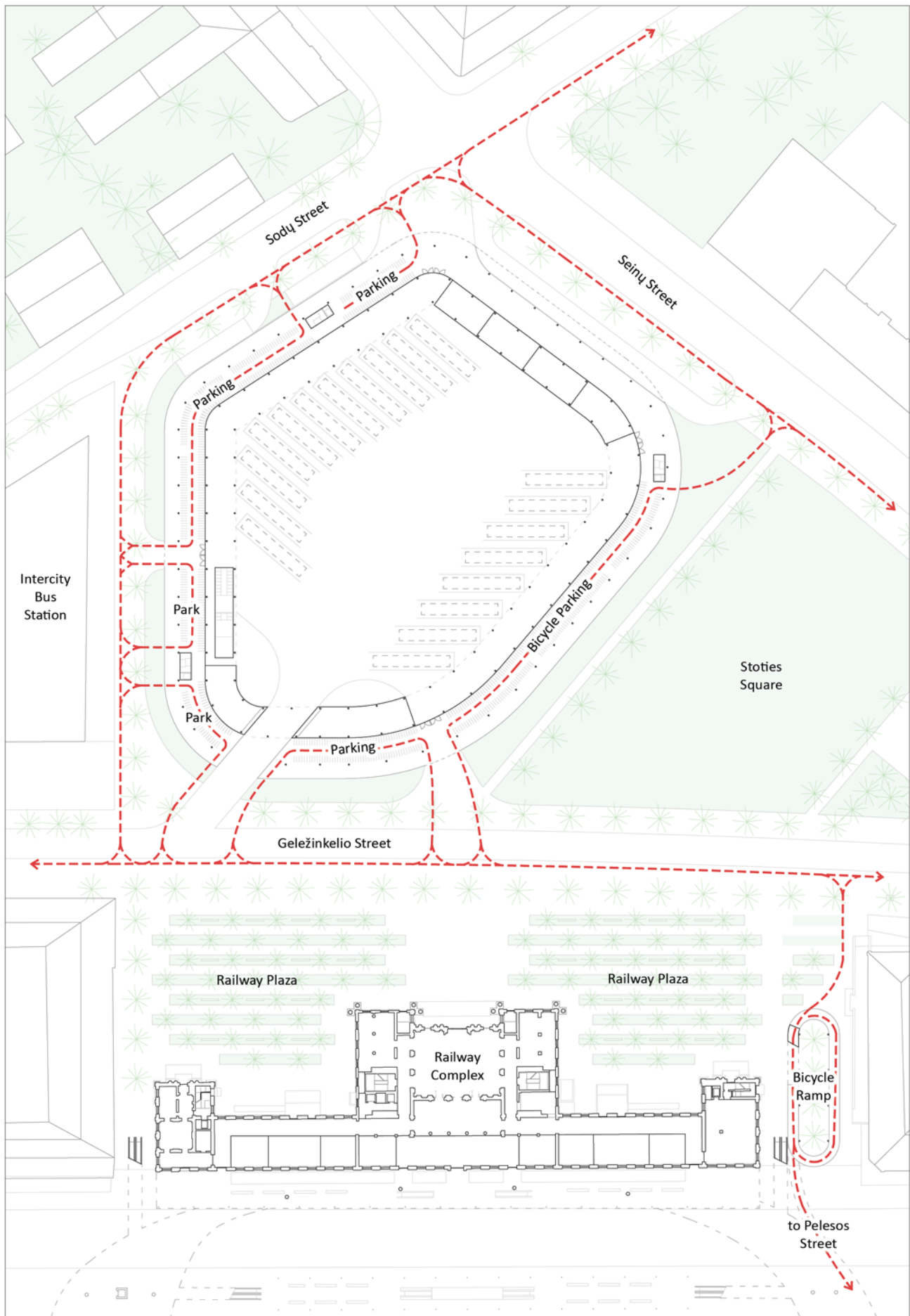
*Room Quality Grade	Room Height Quality	Natural Daylight	Location & Proportion
A-1	Very High (> 4m)	Yes - existing Window	Centre - Convenient
A-2	Medium (+- 3-4m)	Yes - existing Window	Centre - Convenient
B	High (+- 4m)	Yes - existing Window	Separated - too far
C-1	Too Low (< 3m)	Yes - existing Window	Centre - Convenient
C-2	Too Low (< 3m)	Yes - existing Window	Separated - too far
C-3	Too Low (< 3m)	No	The attic is too narrow
D-1	Medium (+- 3-4m)	Partial - New Lightwell	Basement - Convenient
D-2	Medium (+- 3-4m)	No	Basement - Convenient
D-3	Medium (+- 3-4m)	No	Basement - Isolated

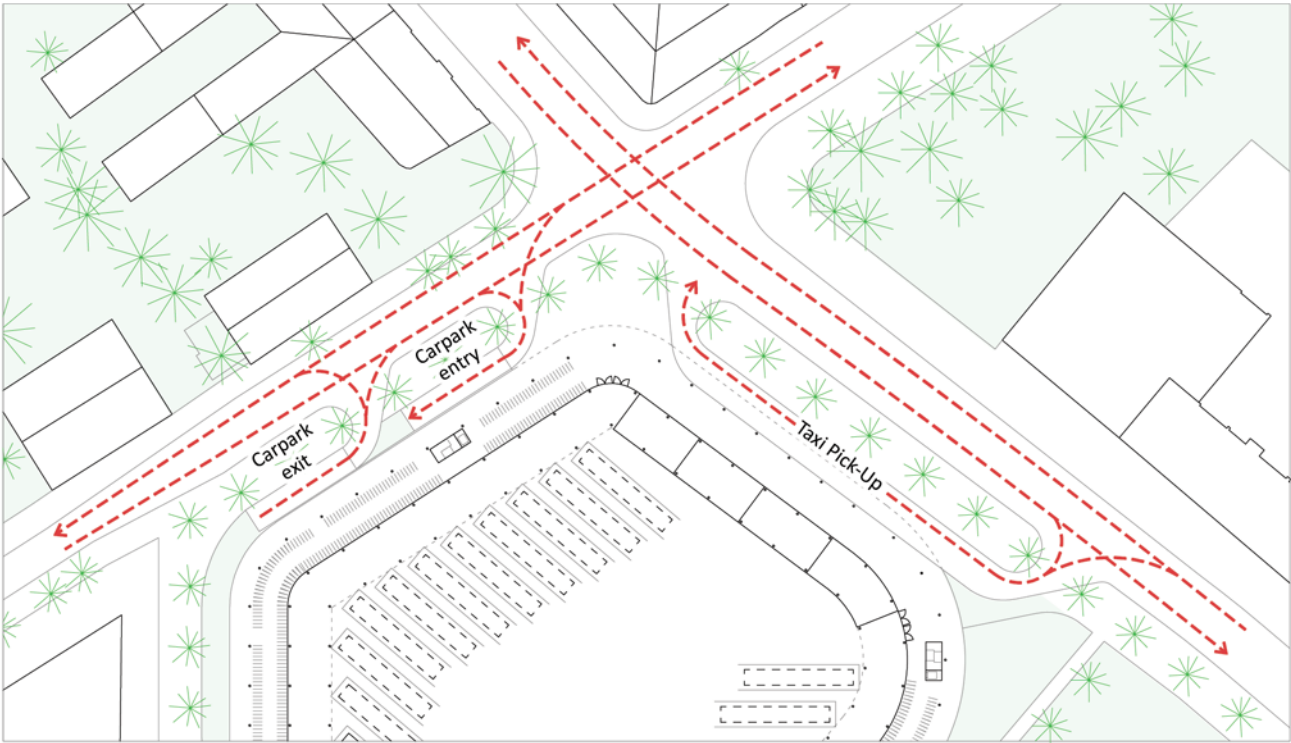


PUBLIC TRANSPORT TERMINAL | Ground Floor Plan | 1/1250

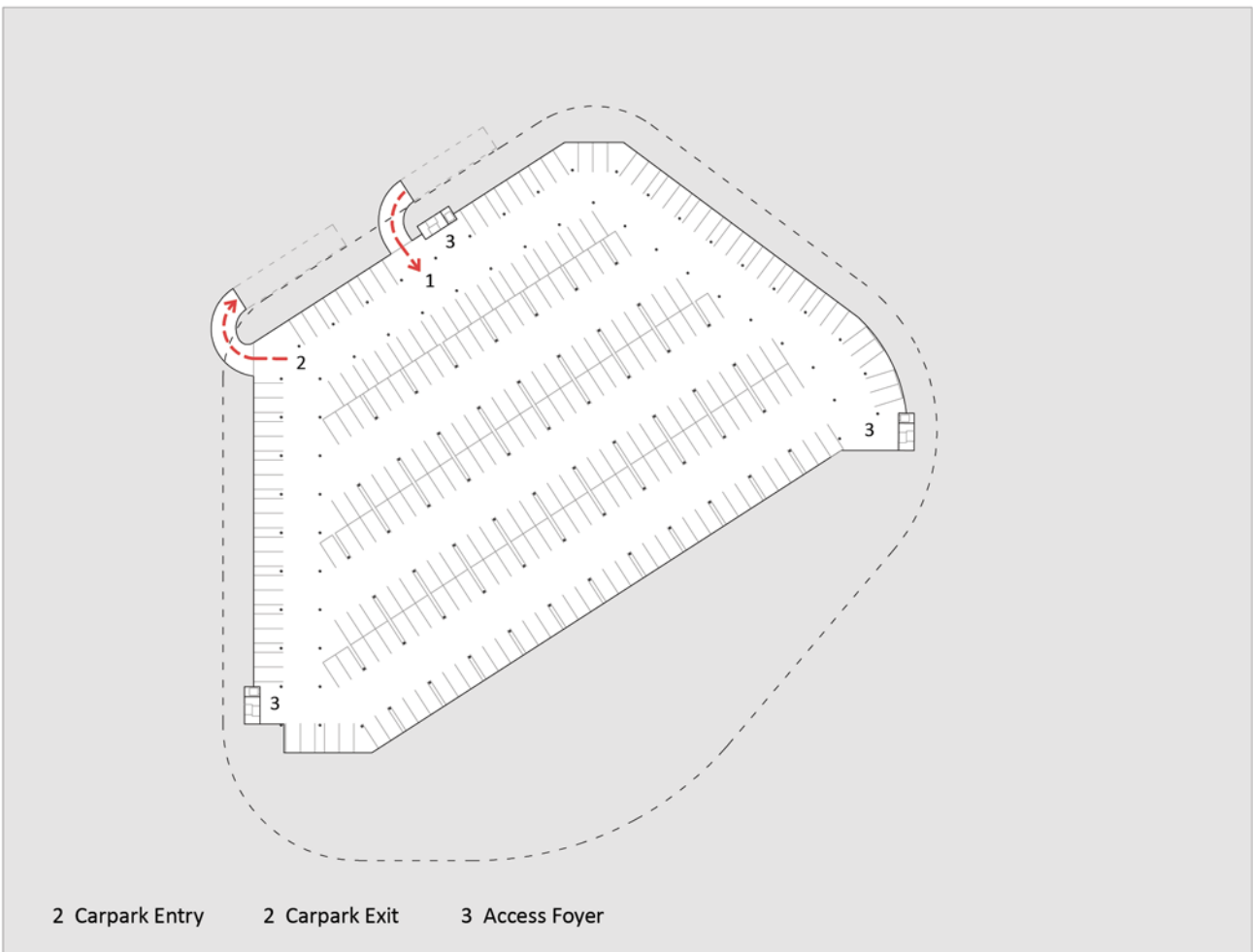
0 20M 40M







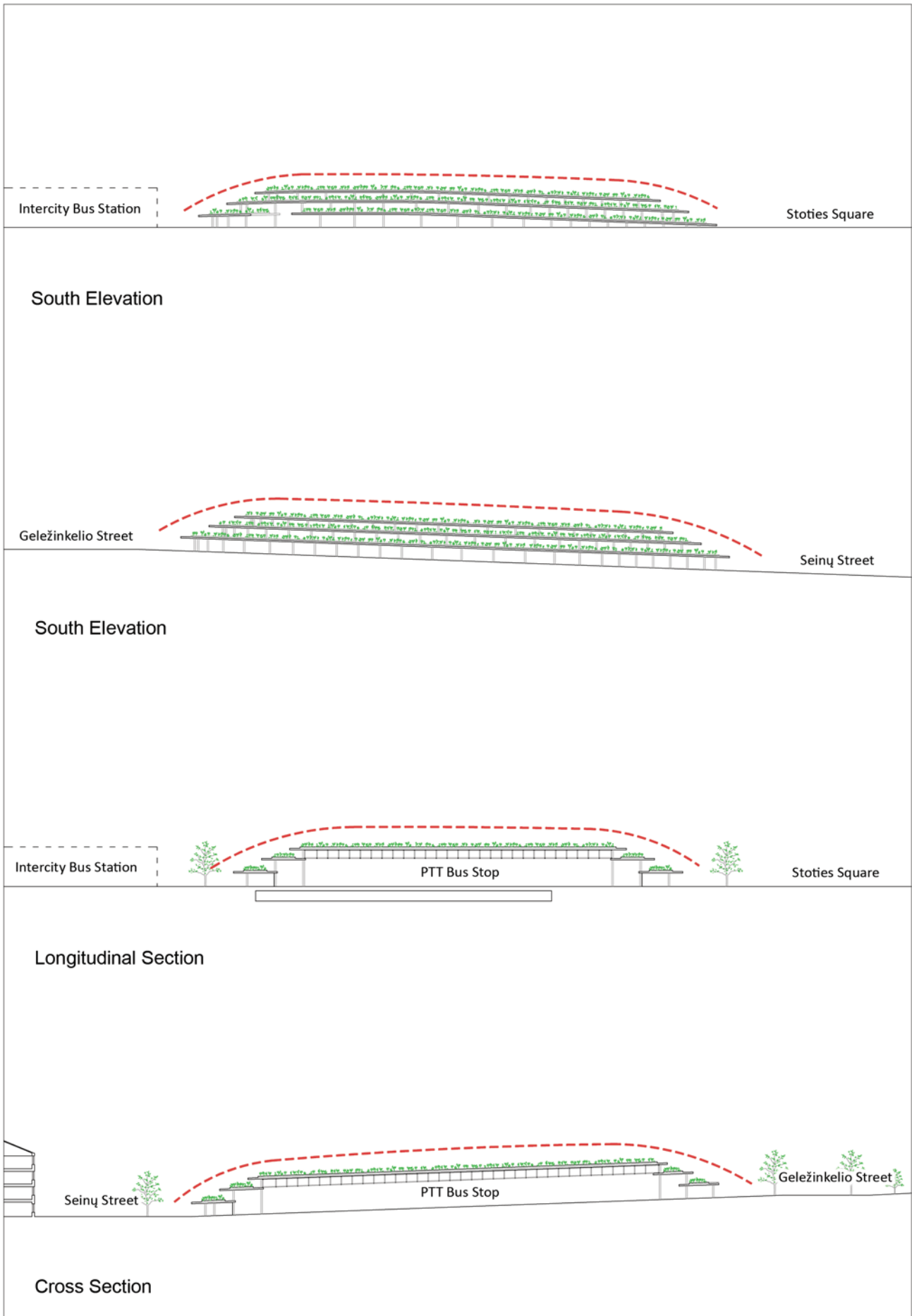
PUBLIC TRANSPORT TERMINAL | Ground Level Vehicle Circulation

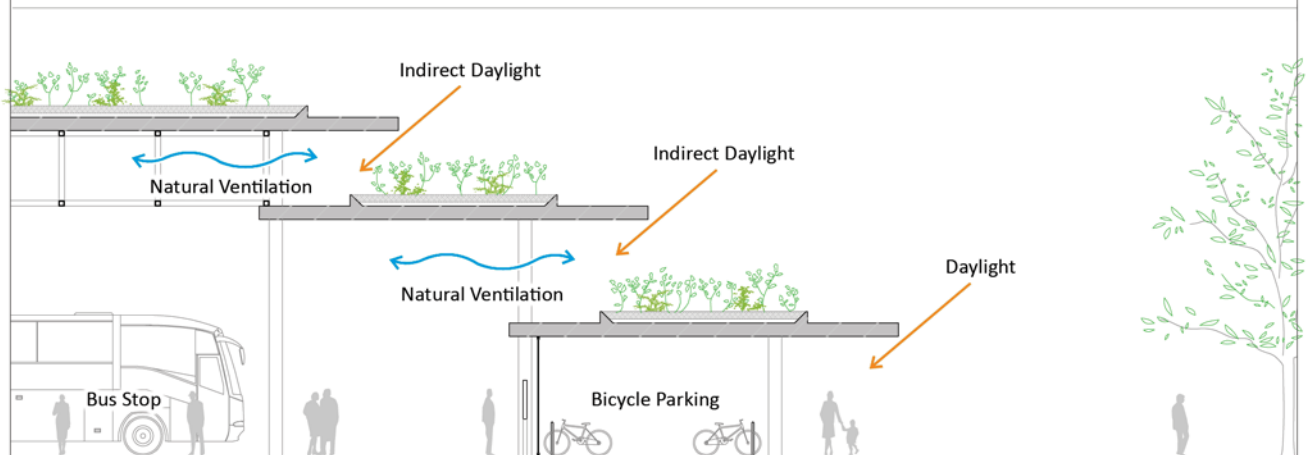
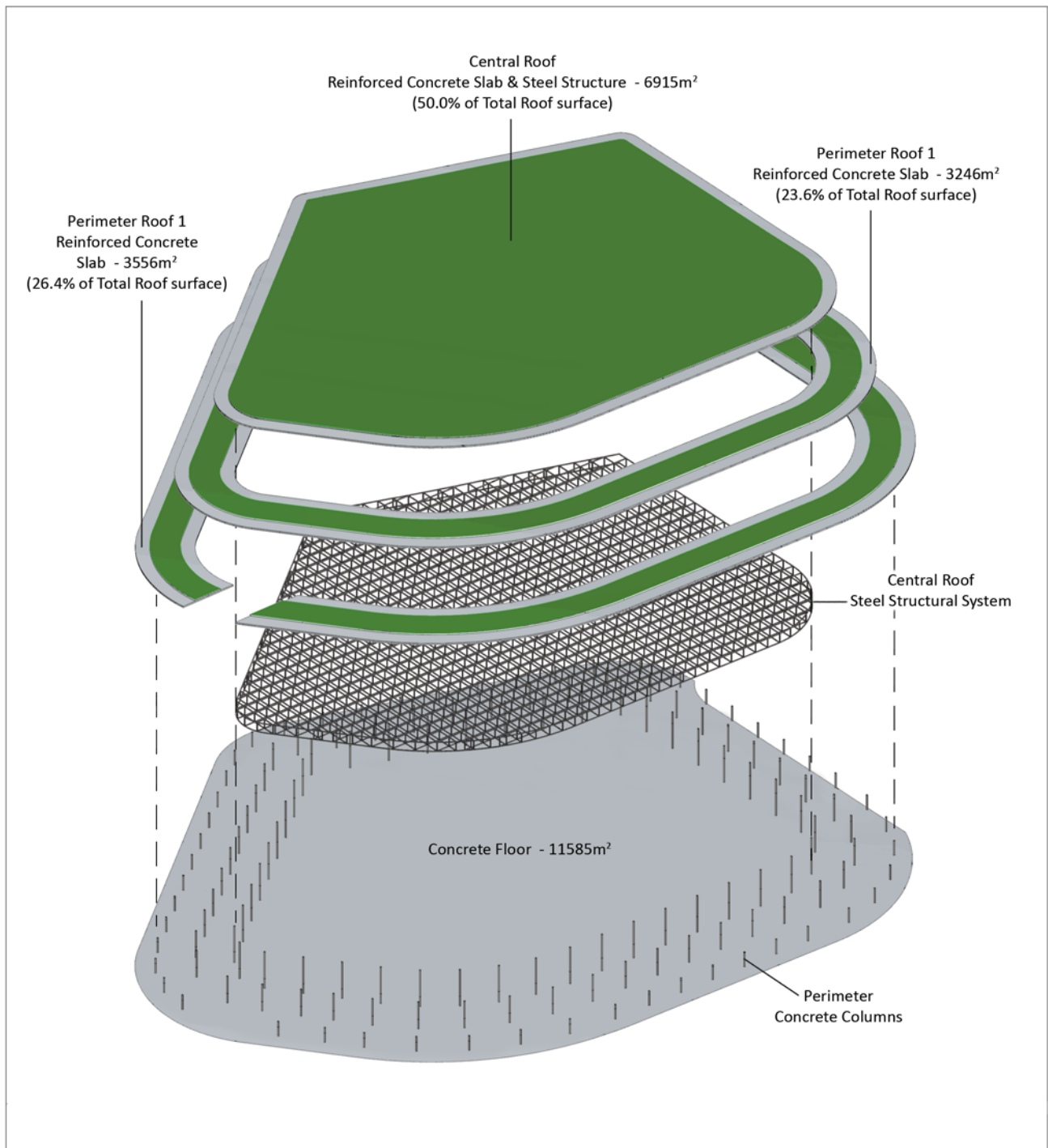


PUBLIC TRANSPORT TERMINAL | Underground Plan | 1/1250

0 20M 40M

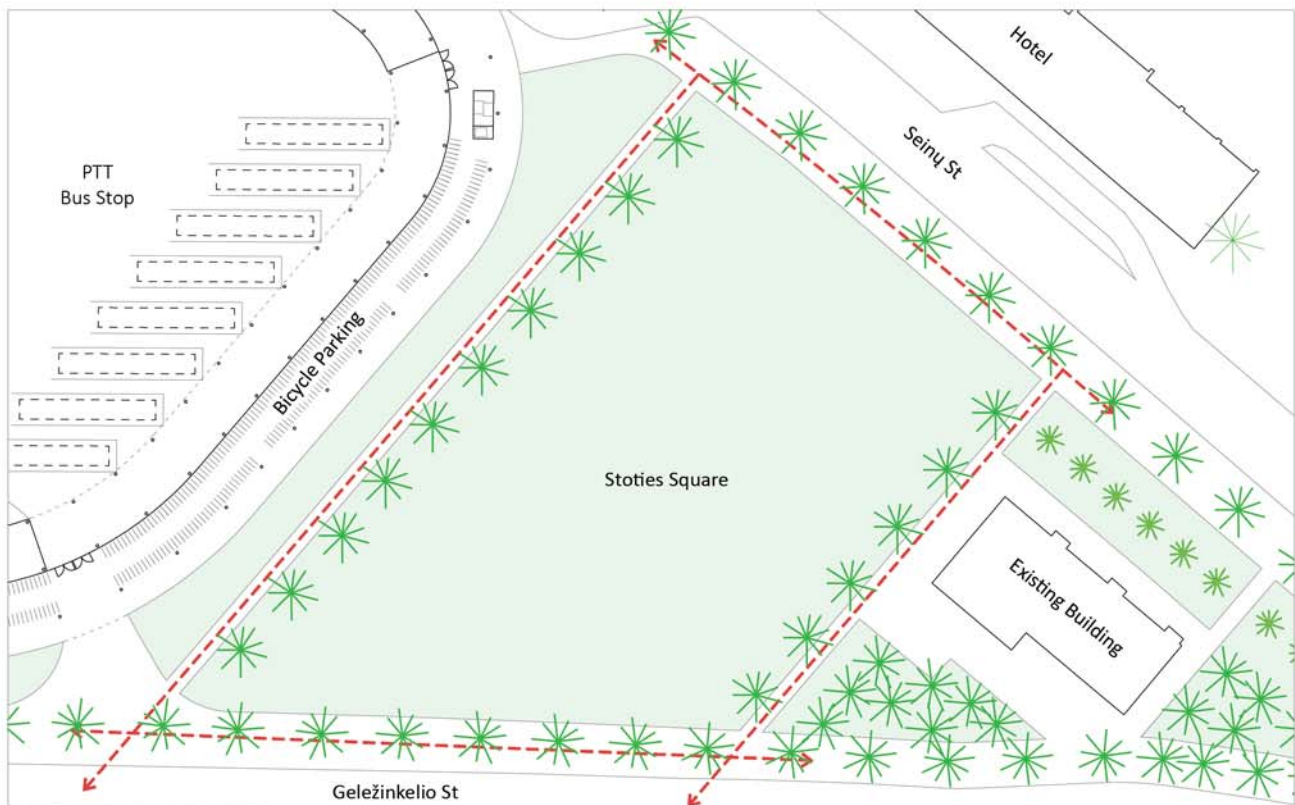






PUBLIC TRANSPORT TERMINAL | Structure & Energy Concept

Area	Area Ratio (%)	'Public Zone' Floor Area (m ²)	'Restricted Zone' Floor Area (m ²)
1. Ground Floor	60,6	10.941	309
Public Circulation	7,8	1.449	-
Passenger Area (Information Hall)	7,5	1.399	-
Restroom	0,5	91	-
Bus Stop & Circulation	32,3	6.001	-
Bicycle Parkings	7,5	1.397	-
Taxi Waiting	1,1	209	-
Retail Shops	2,1	395	-
Office	1,7	-	309
2. Underground	39,4	7.313	-
Car parkings	37,5	6.953	-
Circulation	1,9	360	-
Total Area	100,0	18.254	309
			18.563



The Stoties Square is a an event yard which able to accomodate for various public activities

Precint Plan



Section

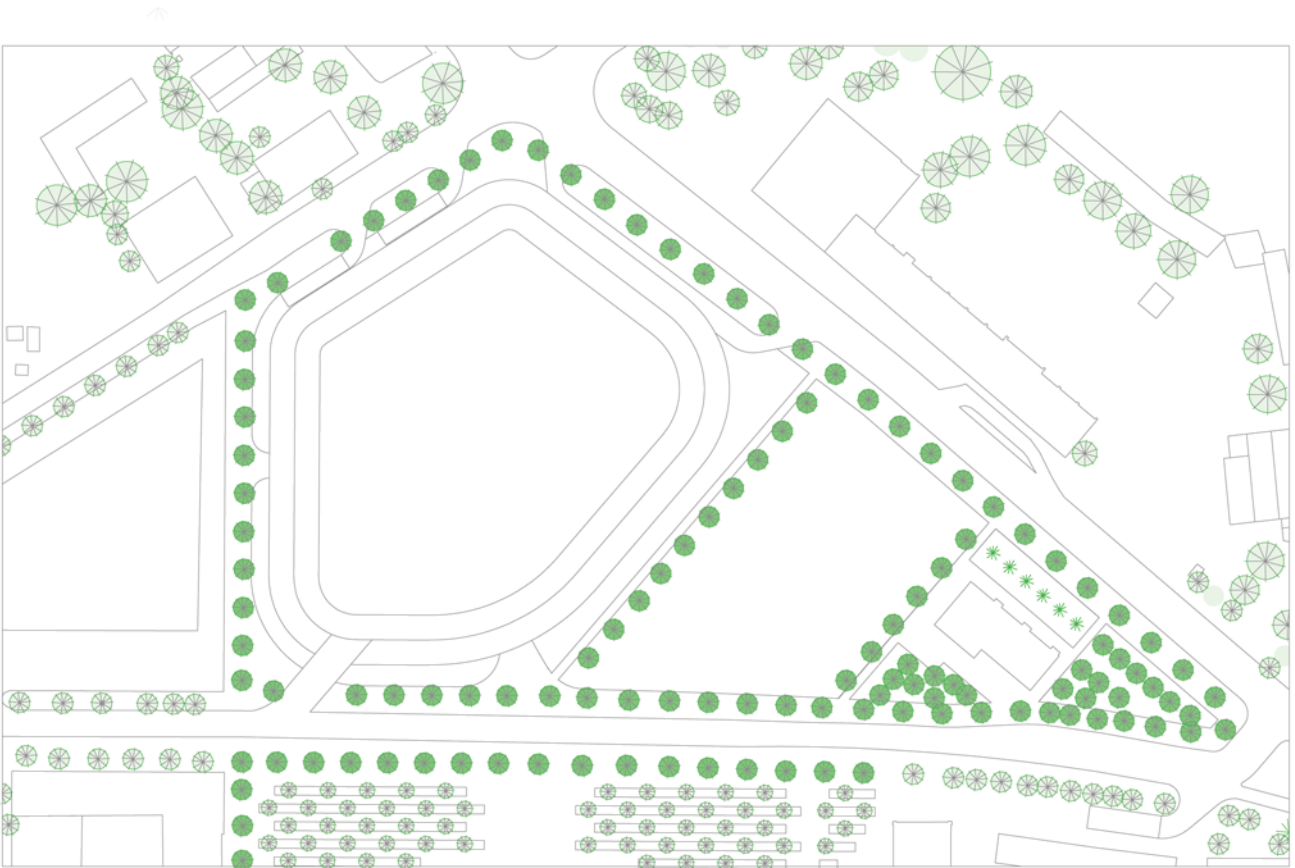


The recessed in-ground lightings highlight the landscaping, and at the same avoid direct illumination towards passersby

Lighting Concept



Existing condition of the site: where approximately 155 trees are on Stoties Square and 4 trees are on the Railway Complex zone



The proposed planning is to relocate a total of 132 trees within the site, while the remaining 27 trees on adjacent vicinity